

正能光電股份有限公司
Lattice Energy Technology Corporation
台北市沙止區新台五路一段77號18樓-4
18F-4, No. 77, Sec. 1, Xintai 5th Rd., Xishi
Dist., New Taipei City 221, Taiwan (R.O.C.)
02-2598-8156

佛山正能光電有限公司
Foshan Lattice Energy Technology Corporation
佛山市禪城區華英南路13號65-7-8
B5-7-8 Foshan National Torch Innovation
Pioneering Park (No. 13, Huabao South
Rd., Chancheng Dist., Foshan City,
Guangdong Province, China)
0757-82263339

letc_service@letc-tech.com
www.letc-tech.com



2018/2019
產品型錄
Product Introduction v1

letc-tech.com

Contents

| 目錄

Optics Tech Inventor

- 01** Introduction
公司簡介
- 05** GEBG - Green Energy Business Group
綠色能源事業群
- 11** OSBG- Optical System Business Group
光學系統事業群
- 29** LDBG- Lighting Design Business Group
照明設計事業群

The catalog content is only for reference. If you have other product/
service demands, please contact our S & M Dept.

本目錄內容僅為例示，若有其他產品 / 服務需求，請洽我司業務行銷部門。

Introduction

公司簡介

Foreword | 前言

Lattice Energy Technology Corporation (“LETC”) was established on April 7, 2009 in Taipei, Taiwan. LETC is an innovative optical design house with complete intellectual properties, and specializing in electro-optical technology. We have complete capacity in optical simulation, tooling and molding, lighting design, customized lamps, and smart system integration. To expand business in China, in 2011, LETC established its branch office “Lattice Energy Technology (Hong Kong) Limited”, and established “Foshan Lattice Energy Technology Corporation” in Foshan National Torch Innovation Park (“Foshan LETC”) in 2012 in China. In the meantime, LETC business keeps growing in Japan, Europe and Southeast Asia. In 2015, LETC set up an office in Jakarta, Indonesia, and new J.V. companies with local agents are ready in HCM, Hanoi and Bangkok City in Vietnam and Thailand in 2017 to broaden its lighting business locally.

Based on different product lines, there are four business groups in our company; namely, AOBG, GEBG, OSBG, and LDBG. AOBG focuses on imaging optics such as designing robot-using dual camera lens module, vehicle lens module, POS lens, 3-D printer scanner lens, and camera modules. GEBG spots on LED secondary optics with selective materials such as PC, PMMA, and glass. OSBG concentrates on special tailor-made luminaires requested by lighting designers. At last, LDBG integrates GEBG and OSBG’s product lines and services for lighting design projects via Dialux and practical engineering experiences.

LETC has complete product roadmap and over 160 patents and patent applications in the world to support business growth fast and strongly in Asia, America and Europe.

正能光電股份有限公司（以下簡稱「正能光電」）於2009年4月7日，在臺灣臺北成立，是一家在臺灣以光學模擬設計、照明設計、特種燈具、客製化燈具及開發系統整合為核心能力，具有優質智財的創新科技公司。

正能光電於2011年成立子公司「正能光電（香港）有限公司」，2012年於中國佛山國家火炬創新創業園區成立「佛山正能光電有限公司」（以下簡稱「佛山正能光電」），同時積極拓展日本、歐洲及東南亞市場等。2015年第三季於印尼成立雅加達辦公室，以經營回教社群及海外通路，並在2017年與越南及泰國合作夥伴，在胡志明市、河內及曼谷設立新的合資公司以期達到在地化經營。

正能光電依據產品別分類共有四個事業群，分別是先進光學事業群，綠色能源事業群，光學系統事業群以及照明設計事業群。先進光學事業群致力於設計成像光學鏡頭以及模組，像是機器人用的雙鏡頭模組、車載用鏡頭模組，掃描鏡頭，3-D 列印掃描鏡頭和相機模組。綠能事業部專注於研發 PC、PMMA 或是玻璃材質的二次光學的透鏡、反光杯以及擴散元件。光學系統事業部重心放在為顧客進行客製化的燈具以及獨特光源。我們的照明設計事業群則是活用我們綠能以及光學系統事業群的產品，以及 Dialux 模擬系統設計，和工程單位的豐富經驗，來完成顧客要求的照明設計案。

正能光電有完整的產品規劃、光學設計模具開發經驗、技術專利組合等，全球已取得及申請中的專利共有一百六十件，讓我們在亞洲、美洲以及歐洲的業務迅速成長。



Vision | 願景

LETC provides customers with full range of optical and lighting solution. Our services cover from optical design, customized lamp design and manufacturing, smart control, environmental lighting design indoors and outdoors, not to mention about security IP camera planning. We help our customers to solve their problems with reasonable cost and lead-time, high quality, and good after-sale service.

正能光電的目標在於提供客戶專業的「全方位光學及照明解決方案及服務」，包括光學設計及製造、結合成像技術的客製化產品，室內外整體照明和監控系統規劃，也包含設計及製造高品質的專業化燈具，我們希望能給予我們的客戶用合理的價格及交期、最好的品質以及完善的售後服務來解決他們的需求。

Milestones of LETC | 正能光電大事紀

2018	Set up J. V. optics and lighting design company in Los Angeles, United States of America. Will set up J. V. optics and lighting design companies in HCM, Vietnam. 在美國洛杉磯成立光學與照明設計合資公司 將在越南胡志明市成立光學與照明設計合資公司
2017	Set up J. V. optics and lighting design company in Bangkok, Thailand. Set up J. V. optics and lighting design companies in Shenzhen, China. Set up J. V. optics and lighting design companies in Tokyo, Japan. 在泰國曼谷成立光學與照明設計合資公司 在中國深圳成立光學與照明設計合資公司 在日本東京成立光學與照明設計合資公司
2016	Alliance of China Tier 1 supplier, Storda, in E-platform. Agent of Rosy LED luminaire in Taiwan and Vietnam. Merger of Z-Sky – a company established by ex- R&D Dept. VP from Foxconn MOEBG. (World No. 1 DSC maker in 2006.) 正能成為中國第一級零組件電子交易平台大公司世拓達的合作廠商 引進明士品牌燈具，成為其在台灣以及越南的獨家代理商 正能光電合併展盛公司
2015	Development of OD17 refractive differentiation structure lens. Flagship shop in Huizhou City, China. Foshan LETC as the largest lighting design office in Foshan. Flagship shop in Jakarta City, Indonesia. 研發出領先市場的 OD17 折射式微分結構透鏡 正能光電中國惠州旗艦店開幕 佛山正能光電成為佛山最大照明事務所 正能光電於印尼雅加達旗艦店開幕



R&D Capabilities | 研發能力

GEBG - Green Energy Business Group | 綠色能源事業群

LETC cooperates with the major LED chip makers such as Nichia, Citizen, Cree, Sharp, Everlight, TdLED, and Evercore for secondary optics research and development. We provide optical simulations and designs for different chips applied in commercial lighting, backlight module, road lights, AOI, High Bay, and special customized lamps. Additionally, LETC also has the ability and experience to provide LASER light source optical components used in scanner, 3-D printer, sensor device, and other medical appliances.

正能光電與各大芯片廠合作，如 Nichia, Cree, Sharp, 億光電子，齊瀚光電、天電及中國芯片大廠 - 中昊光電等，將光學模擬及設計進行芯片的配套，應用在商業照明、背光模組設計、路燈設計、自動光學檢視設計，專業化燈具及特殊客製化燈具設計及製造，提供客戶光學及節能整體解決方案。正能光電也具備提供給掃描、3D 列印、感應器和醫療產品用雷射光源光學元件的能力。

AOBG- Advanced Optics Business Group | 先進光學事業群

Being rooted in past Premier Image Technology Corp. and Foxconn with manufacturing and cost control experiences, our AOBG is able to provide our customers with innovative imaging optics and non-imaging optics products and services. We launched brand-new ideas such as 3-D dual camera modules for game console, vehicle LED lamps + car event recorder, sensor light + IP camera, E-bike lens and camera module, aquarium lamps and monitoring system, 3-D printer scanner lens and camera modules. Since 2016, we began the research and development of AR and VR.

我們光學成像事業部承襲了普立爾的製造經驗以及富士康集團的成本控管能力，讓我們有能力提供創新的成像與非成像光學產品的設計與製造。先進成像事業部有許多創新的概念產品，像是 3D 雙鏡頭模組、車用 LED 燈結合行車紀錄器的產品、監控鏡頭加上感應燈、E-BIKE 鏡頭、相機模組、水族燈、監控系統還有 3D 列印機的感應透鏡以及相機模組。自 2016 年起，我們已經開始投入 AR 以及 VR 的研發。



OSBG- Optical System Business Group

| 光學系統事業群

In order to serve diverse customers at the same time, LETC sets up OSBG and IDD Depts. focusing on the research and development of stylish and practical products. Products like aquarium lamps for corals, fish collection lamps, lens spot lights, AR111 – a patent pending combination of coating lens and reflector, PAR series like PAR 30, PAR 38, and PAR 52 and eye protection desk lamps are the leading products. Dimmable solutions are also our direction of product development. With these techniques, we can help our customers achieve the goal of energy-saving and create excellent lighting performance.

正能光電為同時服務多元化客戶，故特別成立光學系統事業群及工業設計部門，主要以具設計感及實用性的產品進行開發，如針對珊瑚生長的水族燈、集魚燈、螺旋燈、可拆換透鏡式射燈、AR111 燈具、PAR 系列射燈以及護眼式檯燈等，調光功能是目前光學系統事業群的新方向。我們希望透過這樣的技術來幫助我們的客戶達到省電節能，並且創造出優良的照明效果。

LDBG- Lighting Design Business Group

| 照明設計事業群

We perform optical simulation and rendering according to the on-site situations and survey, then submit artistic lighting concepts with practical proposals. Combining our optical design ability and novel customized lamp integration system, we can adjust to perform the most appropriate illumination and lighting effect for the project. AOBG's security monitoring camera system also helps our clients integrate safety mood at the same time. Our designers completed various projects world-wide including indoor lighting, outdoor lighting, commercial lighting, museum lighting and stadium lighting.

我們的照明設計是針對各種室內、室外照明、商業照明、博物館照明及體育館照明等設計，依現場狀況進行模擬 (Simulation)、渲染 (Rendering)，並搭配光學設計及客製化燈具整合系統，可調整出最適合該場域最佳的照度及光效，兼具美觀及節能省電的經驗，同時整合先進光學事業群的安全監視系統提供客戶安心方案。故除了純設計案以外，正能光電也同時具有統包特殊照明及燈具組合調整能力，可依不同照明環境，微調配合的燈具，以降低燈具的維修係數，以利客戶節省更多成本。

Green Energy Business Group

| 綠色能源事業群

GEBG

LETC cooperates with chip companies including Nichia, Cree, Sharp, Everlight, LUSTROUS and Evercore in China and combines optical simulation and lighting design to fit many commercial lighting, cap lens module design, street light design and AOI.

正能光電與各大芯片廠合作，如 Nichia、Cree、Sharp、億光電子，齊瀚光電及中國芯片大廠 - 中昊光電等，將光學模擬及設計進行配套，如商業照明、背光模組設計、路燈設計、自動光學檢測設計。



OBM Lens

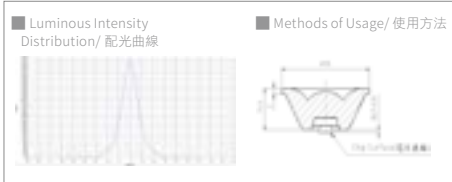
| 公版透鏡



GE3011-0120-03

Ø 35x14 mm

8 g



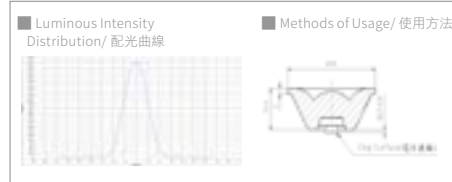
Beam Angle 照射角度 16° /21°
 Recommendation LED Chip 建議使用 LED 晶片 LES 6/9 mm
 Back Focal Length (BFL) 後焦距 0.8 mm
 Operating Temperature 工作溫度 Under 90° C
 Materials 材質 PMMA 聚甲基丙烯酸甲酯



GE3011-0130-04

Ø 35x14 mm

15 g



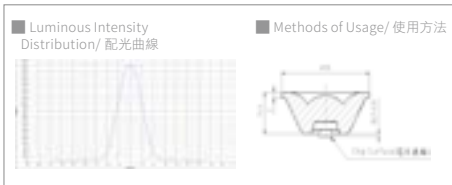
Beam Angle 照射角度 24° /28°
 Recommendation LED Chip 建議使用 LED 晶片 LES 6/9 mm
 Back Focal Length (BFL) 後焦距 0.8 mm
 Operating Temperature 工作溫度 Under 90° C
 Materials 材質 PMMA 聚甲基丙烯酸甲酯



GE3011-0120-07

Ø 42x20 mm

15 g



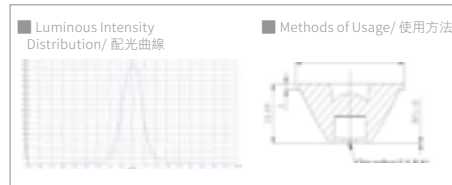
Beam Angle 照射角度 13.6° /18°
 Recommendation LED Chip 建議使用 LED 晶片 LES 6/9 mm
 Back Focal Length (BFL) 後焦距 1.05 mm
 Operating Temperature 工作溫度 Under 90° C
 Materials 材質 PMMA 聚甲基丙烯酸甲酯



GE3011-0130-03

Ø 42x20 mm

15 g



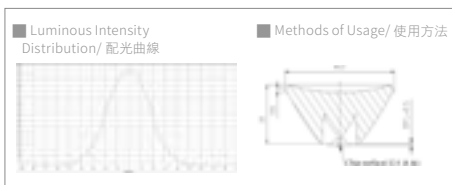
Beam Angle 照射角度 19.6° /24°
 Recommendation LED Chip 建議使用 LED 晶片 LES 6/9 mm
 Back Focal Length (BFL) 後焦距 0.8 mm
 Operating Temperature 工作溫度 Under 90° C
 Materials 材質 PMMA 聚甲基丙烯酸甲酯



GE3011-0140-03

Ø 42x22 mm

16.5 g



Beam Angle 照射角度 40°
 Recommendation LED Chip 建議使用 LED 晶片 LES 6/9 mm
 Back Focal Length (BFL) 後焦距 0.5 mm
 Operating Temperature 工作溫度 Under 90° C
 Materials 材質 PMMA 聚甲基丙烯酸甲酯



GE3011-0130-13

Ø 50x21 mm

25±3 g



Beam Angle 照射角度 24°
 Recommendation LED Chip 建議使用 LED 晶片 CREE 13XX、15XX
 Back Focal Length (BFL) 後焦距 1.7 mm
 Operating Temperature 工作溫度 Under 90° C
 Materials 材質 PMMA 聚甲基丙烯酸甲酯

OBM Lens

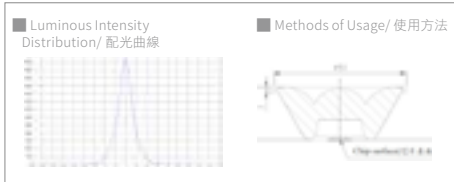
| 公版透鏡



GE3011-0120-01

Ø 50x21 mm

21 g



Beam Angle 照射角度 19.6° /24°

Recommendation LED Chip 建議使用 LED 晶片 LES 9/18 mm

Back Focal Length (BFL) 後焦距 0 mm

Operating Temperature 工作溫度 Under 90° C

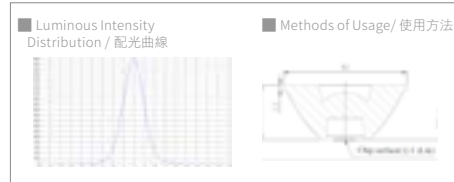
Materials 材質 PMMA 聚甲基丙烯酸甲酯



GE3011-0130-07

Ø 50x21 mm

21 g



Beam Angle 照射角度 24° /28°

Recommendation LED Chip 建議使用 LED 晶片 LES 9/18 mm

Back Focal Length (BFL) 後焦距 0 mm

Operating Temperature 工作溫度 Under 90° C

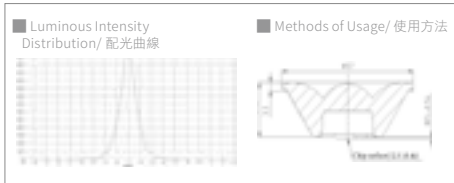
Materials 材質 PMMA 聚甲基丙烯酸甲酯



GE3011-0120-04

Ø 57x21 mm

30 g



Beam Angle 照射角度 15° /20°

Recommendation LED Chip 建議使用 LED 晶片 LES 9/18 mm

Back Focal Length (BFL) 後焦距 0.54 mm

Operating Temperature 工作溫度 Under 90° C

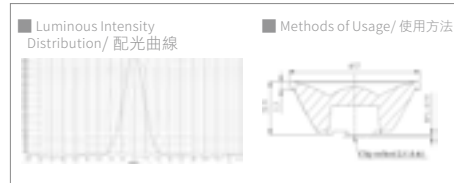
Materials 材質 PMMA 聚甲基丙烯酸甲酯



GE3011-0120-05

Ø 57x21 mm

28 g



Beam Angle 照射角度 17° /24°

Recommendation LED Chip 建議使用 LED 晶片 LES 9/18 mm

Back Focal Length (BFL) 後焦距 0.91 mm

Operating Temperature 工作溫度 Under 90° C

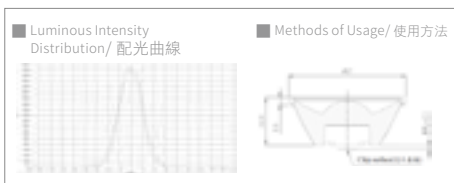
Materials 材質 PMMA 聚甲基丙烯酸甲酯



GE3011-0130-01

Ø 57x21 mm

24.4 g



Beam Angle 照射角度 24° /28°

Recommendation LED Chip 建議使用 LED 晶片 LES 9/18 mm

Back Focal Length (BFL) 後焦距 0 mm

Operating Temperature 工作溫度 Under 90° C

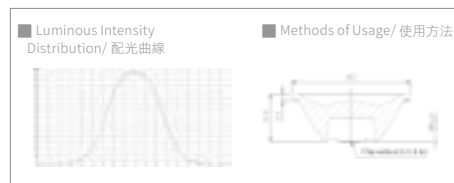
Materials 材質 PMMA 聚甲基丙烯酸甲酯



GE3011-0154-01

Ø 57x21 mm

21.5 g



Beam Angle 照射角度 56° /54°

Recommendation LED Chip 建議使用 LED 晶片 LES 9/18 mm

Back Focal Length (BFL) 後焦距 1.05 mm

Operating Temperature 工作溫度 Under 90° C

Materials 材質 PMMA 聚甲基丙烯酸甲酯

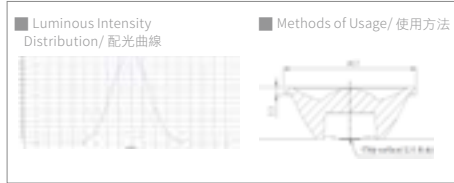
OBM Lens | 公版透鏡



GE3011-0144-01

Ø 57x21 mm

24.6 g



Beam Angle 照射角度 38° / 42°

Recommendation LED Chip 建議使用 LED 晶片 LES 9/18 mm

Back Focal Length (BFL) 後焦距 0 mm

Operating Temperature 工作溫度 Under 90° C

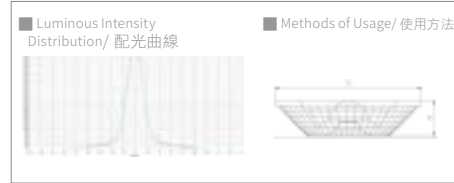
Materials 材質 PMMA 聚甲基丙烯酸甲酯



GE3021-0110-01

Ø 75x19 mm

48±3 g



Beam Angle 照射角度 15° / 24°

Recommendation LED Chip 建議使用 LED 晶片 CREE 13XX-15XX

Back Focal Length (BFL) 後焦距 0 mm

Operating Temperature 工作溫度 Under 90° C

Materials 材質 PMMA 聚甲基丙烯酸甲酯

IR Lens | 紅外線透鏡



GE3011-0210-01

Ø 21.6x14 mm

4.5 g



Beam Angle 照射角度 7°

Recommendation LED Chip 建議使用 LED 晶片 OSRAM-4713/4715

Back Focal Length (BFL) 後焦距 0 mm

Operating Temperature 工作溫度 Under 90° C

Materials 材質 PMMA 聚甲基丙烯酸甲酯



GE3011-0230-01

Ø 21.6x14 mm

4.5 g



Beam Angle 照射角度 30°

Recommendation LED Chip 建議使用 LED 晶片 OSRAM-4713/4715

Back Focal Length (BFL) 後焦距 0 mm

Operating Temperature 工作溫度 Under 90° C

Materials 材質 PMMA 聚甲基丙烯酸甲酯

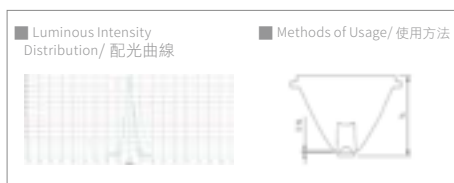
Spot Light Lens | 投射燈透鏡



GE3021-0210-01

Ø 20x14 mm

1.75 g



Beam Angle 照射角度 8°

Recommendation LED Chip 建議使用 LED 晶片 OSRAM SSL80 -OSRAM SSL150

Back Focal Length (BFL) 後焦距 0.16 mm

Operating Temperature 工作溫度 Under 90° C

Materials 材質 Plastic 塑膠

Side Emitting Lens | 側發光透鏡



GE3021-1670-01

19.8x15.5x14 mm

1.5±0.2 g



Beam Angle 照射角度 Horizontal: 100° ; Vertical: 45°

Recommendation LED Chip 建議使用 LED 晶片 CREE-XPE

Operating Temperature 工作溫度 Under 90° C

Materials 材質 PMMA Non-flame-retardant 無阻燃聚甲基丙烯酸甲酯

Six Eyes Array Lens | 六眼陣列透鏡

GE3021-0220-04

163x36x9 mm

27±3g

洗牆燈

洗柱燈

Beam Angle 照射角度 15°

Recommendation LED Chip 建議使用 LED 晶片 OSRAM OSLOM SSL150

Back Focal Length (BFL) 後焦距 0.58 mm

Operating Temperature 工作溫度 Under 90° C

Materials 材質 PMMA 聚甲基丙烯酸甲酯



LASER Lenticular Lens | 雷射光柵透鏡

GE3028-1490-03

10x8 mm

0.5 g

雷射模組

條碼感應

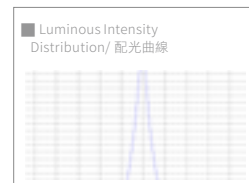
Beam Angle 照射角度 96°

Recommendation Light Source 建議使用 LASER

Back Focal Length (BFL) 後焦距 無限制

Operating Temperature 工作溫度 Under 90° C

Materials 材質 Plastic 塑膠



Cap Lens | 背光透鏡

GE3021-1880-19

Ø 19 mm

1.1 g

液晶顯示器

廣告燈箱

Beam Angle 照射角度 150°

Recommendation LED Chip 建議使用 LUXEON_I

Back Focal Length (BFL) 後焦距 0 mm

Operating Temperature 工作溫度 Under 90° C

Materials 材質 PMMA 聚甲基丙烯酸甲酯



AR111 Patent-pending

| Lens and reflector combination



GE3022-0930-01

Ø 111x33mm

60g

筒燈

防眩光

專利

Lens plus reflective cup solution 透鏡和反光杯方案

Beam Angle 照射角度 28°

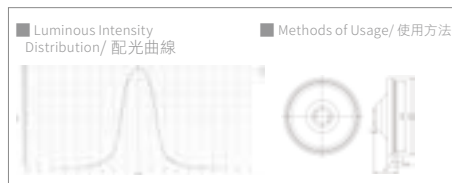
Recommendation LED Chip 建議使用 NTCLS024B-V1-E

Operating Temperature 操作溫度 Under 70° C

Materials 材質 (1) Lens 透鏡 Plastic 塑膠 (2) Reflector 反光杯 Aluminum 鋁

Features/ 產品特色

- » Anti-glare
- » Brand-new coating tech applied
- » Angle adjustment solution
- » Patent-pending
- » 防眩光
- » 嶄新鍍膜技術運用
- » 可藉由透鏡反光杯組合調整角度
- » 模內射出技術 - 專利保護設計



Dentist Light Lens

| 牙醫燈 - 無影燈透鏡模組



Ø 29x35.66 mm

12 g

牙醫燈

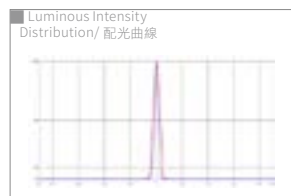
手術燈

Beam Angle 照射角度 12x9°

Recommendation LED Chip 建議使用 LED 晶片 CREE XP-G2

Operating Temperature 工作溫度 Under 90° C

Materials 材質 Shell 外殼 PC



Annular Lens

| 環形透鏡

GE3031-1399-01



Suit for AOI machine

and other custom

applications

能適用自動光學檢測

儀器及其他客製化應

用上

Stage Light Lens

| 舞台燈透鏡



Suit for stage lighting

effects and other

custom applications

能適用舞台燈光效果

及其他客製化應用上

Optical System Business Group

| 光學系統事業群

OSBG

We integrate the upstream optics, mechanics, thermal and electronics into our design and develop customized products to provide the best optical total solution to our clients. For the niche market, we also launch products with special design and practicality such as the lens spot light or smart aqua lamp.

將上游的光學與機、熱、電進行整合設計並客製化開發，以利提供客戶最有效率的全方位解決方案。針對利基市場，也推出具設計感及實用性的產品，如透鏡射燈、智慧水族燈等。



Lens Spot Light

透鏡射燈 OS1011-0103-13/14/15/16/17/18



Low Heat Output
產生熱能少



No UV or IR Radiation
不會有紫外線或紅外線輻射



High Luminous Efficacy of
110 lm/W COB Emitter
110 流明瓦高效率集成式封
裝發光器

Features / 產品特色

- » High luminous efficacy of 110 lm/W COB emitter
- » Highest luminous efficacy for all anti-glare light in the market
- » No UV or IR radiation
- » Cool light for not increasing ambient temperature
- » Flicker free
- » Low heat output
- » Fast response for initiation
- » 3 Kinds of housing colors (Silver/Rose Gold/Space Gray)
- » 110 流明瓦高效率集成式封裝發光器
- » 發光效率高於市面上的其它防眩光產品
- » 沒有紫外線或是紅外線輻射
- » 低溫光源可以有效減少周遭溫度的上升
- » 無頻閃問題
- » 產生熱能少
- » 啟動反應快速
- » 有三種不同外殼顏色 (銀色 / 玫瑰金 / 太空灰)

Detailed Specification/ 詳細規格

Power Consumption 功耗 4.6 W CCT 色溫 2700 K/5000 K/5700 K Beam Angle 發光角度 18° LED Chip LED 晶片 Cree COB Luminous Flux 光通量 350 lm
Input Voltage 輸入電壓 90~260 VAC CRI 演色性 > 80 Quantity of LED LED 數量 COB 1 Pcs Housing Material 外殼材質 Aluminum 鋁
Colors of Housing 外觀顏色 Silver/Rose Gold/Space Gray 銀 / 玫瑰金 / 太空灰 Operating Temperature 操作溫度 -20°C ~50°C Power Driver Certification 電源認證 CE, PF>0.9
Dimension 尺寸 $\Phi 50 \times H 76$ mm Illuminance 照度 1500 Lux Net Weight 重量 700+/-25 g Dimmable 調光性 Available Socket Connection 插座連接器 E11/E14

PAR 30

| PAR30 OS2011-0303-01



CE/UL/Energy Star Certification
CE/UL/Energy Star 的認證



Multiple Angle Lens Choice
多角度透鏡選擇



High Luminous Flux 2600 lm
光通量達 2600 lm

Features / 產品特色

- » Indoor lighting use
- » High luminous efficacy of 100 lm/W COB emitter
- » Flicker free
- » High luminous flux 2600 lm
- » Warranty: 2 years
- » Certificate: CE/UL/Energy Star
- » Housing colors: White/Black
- » 室內用燈具
- » 100 流明瓦高效率集成式封裝發光器
- » 無頻閃問題
- » 光通量達 2600 lm
- » 保固兩年
- » 有 CE/UL/Energy Star 的認證
- » 顏色：白 / 黑

Detailed Specification / 詳細規格

Power Consumption 功耗 35 W CCT 色溫 2700 K/4000 K/5700 K Beam Angle 發光角度 15°/24°/38°/60°
LED Chips LED 晶片 Taiwan COB LED Luminous Flux 光通量 2600 lm Input Voltage 輸入電壓 85~265 VAC CRI 演色性 > 80
Quantity of LED LED 數量 COB 1 Pcs Housing Material 外殼材質 Aluminum 鋁 Operating Temperature 操作溫度 -20°C ~50°C
Dimension 尺寸 $\Phi 96 \times 128$ mm Net Weight 重量 320+/-20 g Socket / Connection 插座 / 連接器 E26/E27

PAR 38

PAR38 OS2012-0303-01/02



CE/UL/PSE/Energy Star Certification
CE/UL/PSE/Energy Star 的認證



IP65
具備 IP65 等級的防水防塵功能



Patent Lens Inside
專利化內嵌透鏡設計

Features / 產品特色

- » Outdoor use, dust and water proof
- » High luminous efficacy of 120 lm/W COB emitter
- » No UV or IR radiation
- » Cool light can reduce the rise of ambient temperature
- » Flicker free
- » Low heat output
- » Approvals: IP65, CE, PSE
- » 具備戶外用防水防塵功能
- » 120 流明瓦高效率集成式封裝發光器
- » 不會有紫外線或紅外線輻射
- » 低溫光源可以有效減少周遭溫度的上升
- » 無頻閃問題
- » 產生熱能少
- » CE/PSE 以及防水防塵認證 IP65

Detailed Specification/ 詳細規格

Power Consumption 功耗 15 W CCT 色溫 2400 K Beam Angle 發光角度 30°/100°

LED Chips LED 晶片 Japan Patent COB LED Luminous Flux 光通量 976 lm Input Voltage 輸入電壓 95~265 VAC CRI 演色性 > 80

Quantity of LED LED 數量 COB 1 Pcs Housing Material 外殼材質 Aluminum 鋁 Operating Temperature 操作溫度 -20°C ~50°C Power Driver Certification 電源認證 CE,PSE

PF>0.9 Dimension 尺寸 Φ 122 × H 131 mm LED Life Time 使用壽命 > 50000 hrs Net Weight 重量 300+/-20 g

PAR 52

PAR52 OS2012-0503-01



IP65 & Salt Spray Resistance
具 IP65 等級防水防塵及防鹽霧



No UV or IR Radiation
不會有紫外線或紅外線輻射



Surge Protection
防雷擊

Features / 產品特色

- » High luminous efficacy of 110 lm/W COB emitter
- » No UV or IR radiation
- » Cool light can reduce the rise of ambient temperature
- » Flicker free
- » Low heat output
- » High luminous flux 3500 lm
- » Dust and water proof IP65
- » Used in boat deck lamp
- » 110 流明瓦高效率集成式封裝發光器
- » 不會有紫外線或紅外線輻射
- » 冷光源可以有效減少周遭溫度的上升
- » 無頻閃問題
- » 產生熱能少
- » 光通量達 3500 lm
- » 具備 IP65 等級的防水防塵功能
- » 使用於船舶甲板燈

Detailed Specification/ 詳細規格

Power Consumption 功耗 40 W CCT 色溫 3000 K/6000 K Beam Angle 發光角度 160° LED Chips LED 晶片 Taiwan COB
LED Luminous Flux 光通量 3500 lm Input Voltage 輸入電壓 90-220 VAC CRI 演色性 >70 / >80 Quantity of LED LED 數量 COB 4 Pcs
Housing of Material 外殼材質 Aluminum 鋁 Operating Temperature 操作溫度 -20°C ~50°C Power Driver Certification 電源認證 CE, PF>0.9 Dimension 尺寸 167 x H 205 mm
LED Life Time 使用壽命 > 50000 hrs Net Weight 重量 700+/-25 g Socket/Connection 插座 / 接頭 E39/E40

Smart Control Track Lamp

| 可調式軌道射燈



Dimmable 3000K~6000K
Color Temperature
3000K~6000K 範圍內色溫可自由調整



Smart Phone APP Control
可使用手機 APP 操控



Low Heat Output
減少熱能產生

Features / 產品特色

- » Smart Phone APP Control
- » Dimmable 3000K~6000K Color Temperature
- » Low Heat Output
- » Excellent LED array efficacy & Better color mixing uniformity
- » Support IOS & Android smart phone APP
- » 可使用手機 APP 操控
- » 3000K~6000K 範圍內色溫可自由調整
- » 低熱產生
- » 優良的光效與混光效果
- » 支援 IOS & Android 手機 APP

Detailed Specification/ 詳細規格

Power Consumption 功耗 30W Net Weight 淨重 650g CCT 色溫 3000K/4000K/5000K/6000K Beam Angle 發光角度 38° LED Chips LED 晶片 LETC LED Array
Input Voltage 輸入電壓 90~240Vac CRI 演色性 >80 Quantity of LED LED 數量 39pcs Housing of Material 外殼材質 Al Operating Temperature 操作溫度 -20°~40°C

Tube

OS1012-0308-01

OS1012-0408-01



Waterproof
防水



Energy saving / High efficiency
高效率 / 節能



Outdoor billboard application
戶外廣告看板應用

Features / 產品特色

- » Energy saving
- » High efficiency
- » Waterproof
- » Outdoor billboard dedicated
- » 節能
- » 高效率
- » 防水
- » 戶外廣告看板專用

Detailed Specification/ 詳細規格

Power Consumption 13W- 3呎 20W- 4呎 CRI >80 Beam Angle (50%) 180° Recommendation LED Chips 2835 SMD LED Luminous Flux 1200 lm- 3呎 1700 lm- 4呎
Socket/Connection Line @60cm Input Voltage 100~240 V Housing of material Glass、PC Operating Temperature -5° C ~ 40° C Warranty 1 year
Dimension (mm) $\Phi 30^* 900$ - 3呎 $\Phi 30^* 1200$ - 4呎 Net weight 250 +/-20 g

LED Desk Lamp

| LED 檯燈 OS1011-0309-01/02



RA \geq 90
高顯色指數 接近真實顏色



7 Steps Touch Dimmable
觸碰式面板具備 7 段調整



Anti Glare
防文字眩光護眼



Adjustable CCT
五段可變色溫



USB Charge
USB 充電口

Features / 產品特色

- » Place anywhere easily
- » 5 kinds of color temperature options (3000 K ~ 6500 K)
- » 7 steps brightness level
- » LED chip color rendering index: 90
- » USB charging port
- » Three axis, full range rotation
- » Light plastic and aluminum body
- » Environment friendly - no UV, no Hg
- » 方便置放於各種空間
- » 5 種色溫自由選擇 (3000 K~6500 K)
- » 7 段式調光
- » LED 芯片顯色指數 90
- » USB 供電座
- » 三軸旋轉
- » 輕質塑料和鋁體散熱
- » 環保無 UV & 汞

Detailed Specification/ 詳細規格

Power Consumption 功耗 14 W +/- 10% (含 USB 最大輸出) CCT 色溫 3000 K ~ 6500 K Beam Angle 發光角度 140° LED Chips LED 晶片 SMD
Illuminance 照度 1300 Lux @ 400 mm Housing Color 外殼顏色 White/Black Input Voltage 輸入電壓 AC 100 ~ 240 V USB Output 5V 1A
CRI 演色性 90 +/- 10% Net Weight 1.2 Kg Quantity of LED LED 數量 51 Pcs Housing Materials 外殼材質 Aluminum Alloy + Plastic 鋁合金 + 塑膠
Operating Temperature 操作溫度 0°C ~ 40°C Power Driver Certification 電源認證 CE、UL、GS、CB、PSE、SAA

Portable Eye Protection LED Lamp

| 攜帶式護眼燈

OS1011-0210-01/02/03/04



6 Brightness Level
6 段式調光



3 Kinds of Color
Temperature Options
3 種不同色溫光可以自由選擇



Battery Capacity & Micro
USB Charge
內建電池 & USB 充電

Features / 產品特色

- » Gentle LED light protecting your eyes
- » Place anywhere easily
- » 6 Steps brightness level
- » 2000 mAh battery capacity & micro USB charge
- » Environment friendly - no UV, no Hg
- » 3 kinds of color temperature options (warm white/cool white/natural white)
- » 柔和 LED 光設計保護眼睛
- » 方便置放於各種空間
- » 6 段式調光
- » 內建 2000 mAh 電池 & Micro USB 充電
- » 環保無 UV & 汞
- » 3 種不同色溫光可以自由選擇 (暖白光 / 冷白光 / 自然白光)

Detailed Specification/ 詳細規格

Power Consumption 總功率 6.25W +/- 10% CCT 色溫 3100 K/ 5400 K/ 4200 K Operating Temperature 工作溫度 0°C ~40°C
Luminous Efficiency 光效 49.30-108.4 lm/W, 54.35-108.1 lm/W, 50.47-102.7 lm/W CRI 演色性 > 70 Housing Material 外殼材質 Aluminum + Silicone 鋁 + 矽膠
Color 顏色 Black/Golden/Rose Gold/Silver 黑色 / 金色 / 玫瑰金 / 銀色 Dimension 尺寸 L 562* W 65*H 210 mm
Input Voltage 輸入電壓 DC5V 1A LED Life Time 使用壽命 Approx. 20000 hrs Net Weight 重量 385 g

Attracting Fish Lamp

集魚燈 OS2044-1812-01



Light Irradiation Angle of 360°
照射角度達 360 度

360°



Under Water IP68
防水達到 IP68

IP68



Special Spectrum to
Attracting Deep Water Fish
針對深水集魚的特殊光譜

Features / 產品特色

- » No UV or IR radiation
- » Cool light can reduce the rise of ambient temperature
- » Low heat output
- » Fast electrical response for initiation
- » Light irradiation angle of 360 ° enhancing under water attracting fish function
- » No external rectifier, lighting circuit is a capacitive circuit
- » Spectral luminous efficacy suitable for most species
- » 2 years warranty
- » Under water IP68
- » Replace 2000 W traditional sodium vapor lamps
- » 沒有紫外線或是紅外線輻射
- » 冷光源可以有效減少周遭溫度的上升
- » 產生熱能少
- » 快速啟動
- » 照射角度達 360 度，增強燈光在水面下聚集魚群的效果
- » 照明電路就是電容電路無需額外的整流器
- » 光譜光效率的特性適合大部分的魚種
- » 兩年保固
- » IP68 標準水下燈
- » 可取代傳統 2000W 鈉氣燈

Detailed Specification/ 詳細規格

Power Consumption 功耗 500 W CCT 色溫 Green & 4000 K Beam Angle 發光角度 360° LED Chips LED 晶片 128 Pcs LG 2835
Luminous Intensity 發光強度 100000-150000 cd Input Voltage 輸入電壓 195 ~ 265 Vac CRI 演色性 > 80
Housing Material 外殼材質 Aluminum + PMMA 鋁 + 壓克力 Operating Temperature 操作溫度 -40 ~ 50° Power Driver Certification 電源認證 CE, PF>0.9
AC Line 交流電電線 30 meter LED Life Time LED 壽命 > 50000 hrs Net Weight 重量 7 Kg (Lamp only)

Aquarium Lamp

| 水族燈 OS1014-0617-01/02



可調整三種色光
藍光 / 白光 / UV 光

Dimmable
B/W/UV



可由手機無線遙控

Wireless Control
App Available



多種不同透鏡角度選擇

Multiple Angle
Lens Choice

Features / 產品特色

- » Fit for photosynthesis spectrum
- » Dimmable B/W/UV
- » Wireless control & App available
- » Low heat output
- » Multiple angle lens choice
- » Excellent LED array efficacy & better color mixing uniformity
- » Fresh/sea water application
- » 適合光合作用
- » 藍光 / 白光 / UV 光 三色光可以調整
- » 可由手機無線遙控
- » 產生熱能少
- » 多種不同透鏡角度選擇
- » 優良的光效與混光效果
- » 淡水 / 海水應用

Detailed Specification/ 詳細規格

Power Consumption 功耗 42 W CCT 色溫 Blue/White/UV Beam Angle 發光角度 24°/38°/60° LED Chips LED 晶片 LETC LED Array
Net Weight 重量 600 g Luminous Intensity 發光強度 100000-150000 cd Housing Color 外殼顏色 White/Black Input Voltage 輸入電壓 90 ~ 240 VAC
CRI 演色性 > 80 (白光) Housing of Material 外殼材質 Plastic 塑膠

Explosion Proof Lamp

| 防爆燈

OS2043-0931-01

OS2043-1231-01



Over 70% Power Saving
節能超過 70%



IP65
防水達到 IP65



2 Years Warranty
兩年保固



Features / 產品特色

- » Water-proof & IP65
- » High luminous efficacy of light emitter
- » No UV or IR radiation
- » Cool light can reduce the rise of ambient temperature
- » Over 70% power saving as compared with traditional halogen lamps
- » No perceptible flickering
- » Low heat output
- » Fast electrical response for initiation
- » Superior color rendering index compared to HPS, LPS, MV
- » 2 years warranty
- » 防水、防塵等級達 IP65
- » 發光體具備高度的發光效果
- » 沒有紫外線或是紅外線
- » 低溫光源可以有效減少周遭溫度的上升
- » 比起傳統鹵素燈泡節能超過 70%
- » 不會有閃爍的情況
- » 產生熱能少
- » 快速啟動
- » 與 HPS, LPS, MV 相比具有優越的演色性
- » 兩年保固

Detailed Specification / 詳細規格

Power Consumption 功耗 80/120 W CCT 色溫 2700 K/6500 K Beam Angle 發光角度 130°/140° LED Chips LED 晶片 COB
LED Luminous Flux 光通量 6400/9600 lm Housing Color 外殼顏色 White 白色 Input Voltage 輸入電壓 195 ~ 265 VAC CRI 演色性 > 70
Housing Material 外殼材質 Aluminum 鋁 Operating Temperature 操作溫度 -40°~50° Power Driver Certification 電源認證 CE, PF>0.9
Install Height 安裝高度 5M/8M LED Life Time LED 壽命 > 50000 hrs IP Level 防水等級 IP65

Road Light

路燈

OS2042-0906-01/02/03

OS2042-1206-01/02/03

OS2042-1406-01/02/03

OS2042-0932-01



Features / 產品特色

- › Superior color rendering index compared to HPS, LPS, MV
- › High luminous efficacy of light emitter
- › No UV or IR radiation
- › Cool light can reduce the rise of ambient temperature
- › Over 70% power saving as compared with traditional halogen lamps
- › Flicker free
- › Low heat output
- › Fast electrical response for initiation
- › High Brightness
- › 2 years warranty
- › 與 HPS, LPS, MV 相比具有更優越的演色性
- › 光源具高發光效率
- › 沒有紫外線或是紅外線輻射
- › 冷光源可以有效減少周遭溫度的上升
- › 比起傳統鹵素燈泡節能超過 70%
- › 無頻閃問題
- › 產生熱能少
- › 快速啟動
- › 高亮度
- › 兩年保固
- › Superior color rendering index compared to HPS, LPS, MV
- › High luminous efficacy of light emitter
- › No UV or IR radiation
- › Cool light can reduce the rise of ambient temperature
- › Over 70% power saving as compared with traditional halogen lamps
- › Flicker free
- › Low heat output
- › Fast electrical response for initiation
- › High brightness
- › 2 years warranty
- › 與 HPS, LPS, MV 相比具有更優越的演色性
- › 光源具高發光效率
- › 沒有紫外線或是紅外線輻射
- › 低溫光源可以有效減少周遭溫度的上升
- › 比起傳統鹵素燈泡節能超過 70%
- › 無頻閃問題
- › 產生熱能少
- › 快速啟動
- › 高亮度
- › 兩年保固
- › 2 pcs 100 W solar charger system
- › solar charger board life time 25 years
- › High luminous efficacy of light emitter
- › No UV or IR radiation
- › Cool light can reduce the rise of ambient temperature
- › Over 70% power saving as compared with traditional halogen lamps
- › Flicker free
- › Low heat output
- › 兩組 100 瓦功率的太陽能模組
- › 太陽能板有 25 年的壽命
- › 光源具高發光效率
- › 沒有紫外線或是紅外線輻射
- › 低溫光源可以有效減少周遭溫度的上升
- › 比起傳統鹵素燈泡節能超過 70%
- › 無頻閃問題
- › 產生熱能少

Detailed Specification/ 詳細規格

<p>Power Consumption 功耗 80/120/150 W CCT 色溫 2700 K/6500 K Beam Angle 發光角度 130°/140° LED Chips LED 晶片 Taiwan Epistar Chip Led Luminous Intensity 發光強度 8000/12000/15000 cd Housing Color 外殼顏色 Black Input Voltage 輸入電壓 90 ~ 305 VAC CRI 演色性 > 75 Quantity of LED LED 數量 1/2/3 COB Housing Material 外殼材質 Aluminum 鋁 Operating Temperature 操作溫度 -40°C ~ 50°C Dimension 尺寸 620x280x100/800x291x132/950x291x132mm Power Driver Certification 電源認證 CE, PF>0.95, surge 4 KV LED Life Time LED 壽命 > 50000 hrs Install Height 安裝高度 4 M - 8 M Net Weight 重量 4.45/7.8/11.6 Kg</p>	<p>Power Consumption 功耗 80/120/150 W CCT 色溫 2700 K/6500 K Beam Angle 發光角度 130°/140° LED Chips LED 晶片 Cree/OSRAM LED Chip Luminous Intensity 發光強度 6400/12000/15000 cd Housing Color 外殼顏色 Gray Input Voltage 輸入電壓 195 ~ 265 VAC CRI 演色性 > 75 Quantity of LED LED 數量 COB Housing of Material 外殼材質 Aluminum 鋁 Operating Temperature 操作溫度 -40°C ~ 50°C Power Driver Certification 電源認證 CE, PF>0.9 LED Life Time LED 壽命 > 50000 hrs Install Height 安裝高度 4 M - 8 M</p>	<p>Power Consumption 功耗 80 W CCT (色溫) 2700 K/6500 K Beam Angle 發光角度 130°/140° LED Chips LED 晶片 Taiwan Epistar Chip Luminous Intensity 發光強度 8000 cd Housing Color 外殼顏色 Black Input Voltage 輸入電壓 90~305 VAC CRI 演色性 > 75 Quantity of LED LED 數量 1 COB Housing Material 外殼材質 Aluminum 鋁 Operating Temperature 操作溫度 -40°C ~ 50°C Dimension 尺寸 620x280x100 mm Power Driver Certification 電源認證 CE, PF>0.95, surge 4KV Solar Charger System 太陽能充電器系統 2 Pcs 100w Solar Charger Board/Control System 24V/10A Install Height 安裝高度 4 M - 8 M Net Weight 重量 4.45/7.8/11.6 Kg</p>
--------------------------------------------------------------------------------------------------------------------------------------------------------------------------------------------------------------------------------------------------------------------------------------------------------------------------------------------------------------------------------------------------------------------------------------------------------------------------------------------------------------------------------------------------------------------------------------------------------------------------------------------	------------------------------------------------------------------------------------------------------------------------------------------------------------------------------------------------------------------------------------------------------------------------------------------------------------------------------------------------------------------------------------------------------------------------------------------------------------------------------------------------------------------------------	--------------------------------------------------------------------------------------------------------------------------------------------------------------------------------------------------------------------------------------------------------------------------------------------------------------------------------------------------------------------------------------------------------------------------------------------------------------------------------------------------------------------------------------------------------------------------------------------------------------------------------------------

Flood Light

| 投射燈 OS2047-2001-33/34/35/36



Up to 25000 hrs rated lifetime
使用壽命長達 25000 小時



Water Proof IP65
具備 IP65 等級的防水防塵功能



Environment friendly - No UV, No Hg
不含汞以及紫外線，對環境無害

Features / 產品特色

- » Direct replacement of traditional 100 W/200 W/400 W mercury vapor lamp
- » Stylish design with clear angle setting knob for your desired angle adjustment
- » Compact and light weight heat sink for the optimum heat dissipation
- » Up to 25000 hrs rated life time, reduced maintenance cost
- » High efficiency increasing energy saving, high quality lighting effect
- » Environment friendly - no UV, no Hg
- » LED Chip-on-Board light module inside for a single beautiful light source
- » IP65 rating for both indoor and outdoor use
- » 用於替代傳統 100 W/200 W/400 W 的水銀燈
- » 時尚設計的可調式把手讓您隨心所欲的設定出您需要的角度
- » 具備輕便小巧的散熱裝置，提供良好的散熱效果
- » 使用壽命長達 25000 小時，能有效降低維護成本
- » 高效率、高節能表現、提供高品質的照明效果
- » 不含汞以及紫外線，對環境友善
- » 透過 COB 封裝技術，讓 LED 模塊形成漂亮的單一光源
- » 具備 IP65 防水防塵，室內室外都適用

Detailed Specification/ 詳細規格

Power Consumption 功耗 10 W/30 W/50 W/100 W CCT 色溫 2700K/5000K Beam Angle 發光角度 100° LED Chips LED 晶片 Taiwan COB
LED Luminous Flux 光通量 900/2700/4500/9000 lm Housing Color 外觀顏色 Gray 灰色 Input Voltage 輸入電壓 90 ~ 260 VAC CRI 演色性 > 70
Quantity of LED LED 數量 1 COB Housing of Material 外殼材質 Aluminum 鋁 Operating Temperature 操作溫度 -20 ~ 50°C Power Driver Certification 電源認證 CE, FCC
Dimension 尺寸 47.5*25.5*38.5/48.5*30*38.5/48.5*30*38.5/51*39.5*17 mm Net Weight 重量 1/2/2.8/4.7 Kg Socket Connection 插座連接器 20 cm Lead Wire

High Bay

工礦燈

- » Replace high pressure sodium lamps with less power consumption.
- » Compact and light weight heat sink for the optimum heat dissipation.
- » Up to 25000 hrs rated lifetime, reducing maintenance cost.
- » High efficiency increasing energy saving, high quality lighting effect.
- » Environment friendly - no UV, no Hg.
- » LED Chip-on-Board light module inside for a single beautiful light source.

- » 代替傳統高壓鈉燈，更少的能量耗損。
- » 具備輕便小巧的散熱裝置，提供良好的散熱效果。
- » 使用壽命長達 25000 小時，能有效降低維護成本。
- » 高效率、高節能表現、提供高品質的照明效果。
- » 不含汞以及紫外線，對環境無害。
- » 透過 COB 封裝技術，讓 LED 模塊形成漂亮的單一光源。



OS2043-0704-01
OS2043-0804-01

Product Name 產品名稱 50/70 W Low Bay Light
Power Consumption 功耗 50/70 W
CCT 色溫 6500 K
Beam Angle 發光角度 96°
LED Chip LED 晶片 SMD
LED Luminous Flux 光通量 4500/6300 lm
Housing Color 外觀顏色 Silver 銀色
Input Voltage 輸入電壓 100 ~ 265 VAC
CRI 演色性 > 70
Housing of Material 外殼材質 Aluminum 鋁
Operating Temperature 操作溫度 -20°C ~ 50°C
Net Weight 重量 1.2/1.5 Kg

100 W Replace 100 W sodium lamps
代替傳統 100 W 高壓鈉燈

E39
E40 Normal E39/E40 Socket
適用一般常見的 E39/E40 接頭



OS2043-1204-01

Product Name 產品名稱 120 W High Bay Light
Power Consumption 功耗 120 W
CCT 色溫 2700 K/6000 K
Beam Angle 發光角度 45° /90° /120°
LED Chip LED 晶片 COB
LED Luminous Flux 光通量 12000 lm (6000 K/70 CRI)
Housing Color 外觀顏色 Silver 銀色
Input Voltage 輸入電壓 100 ~ 265 VAC
CRI 演色性 > 70
Quantity of LED LED 數量 1 COB
Housing of Material 外殼材質 Aluminum 鋁
Operating Temperature 操作溫度 -20 ~ 50°C
Net Weight 重量 6 Kg

400 W Replace 400 W sodium lamps
代替傳統 400 W 高壓鈉燈



OS2043-1604-01

Product Name 產品名稱 300 W High Bay Light
Power Consumption 功耗 300 W
CCT 色溫 2700 K/6000 K
Beam Angle 發光角度 45° /90° /120°
LED Chip LED 晶片 COB
LED Luminous Flux 光通量 30000 lm (6000 K/70 CRI)
Housing Color 外觀顏色 Silver 銀色
Input Voltage 輸入電壓 100 ~ 265 VAC
CRI 演色性 > 70
Quantity of LED LED 數量 1 COB
Housing of Material 外殼材質 Aluminum 鋁
Operating Temperature 操作溫度 -20 ~ 50°C
Net Weight 重量 7 Kg

1000 W Replace 1000 W sodium lamps
代替傳統 1000 W 高壓鈉燈



OS2043-1504-01

Product Name 產品名稱 200 W High Bay Light
Power Consumption 功耗 200 W
CCT 色溫 2700 K/6000 K
Beam Angle 發光角度 45° /90° /120°
LED Chip LED 晶片 COB
LED Luminous Flux 光通量 20000 lm (6000 K/70 CRI)
Housing Color 外觀顏色 Silver 銀色
Input Voltage 輸入電壓 100 ~ 265 VAC
CRI 演色性 > 70
Quantity of LED LED 數量 1 COB
Housing of Material 外殼材質 Aluminum 鋁
Operating Temperature 操作溫度 -20°C ~ 50°C
Net Weight 重量 7 Kg

600 W Replace 600 W sodium lamps
代替傳統 600 W 高壓鈉燈



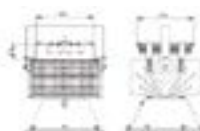
OS2043-1604-02

Product Name 產品名稱 300 W High Bay Light
Power Consumption 功耗 300 W
CCT 色溫 2700 K/5000 K
Beam Angle 發光角度 53°
LED Chip LED 晶片 Taiwan COB
LED Luminous Flux 光通量 30600 lm (5000 K/70 CRI)
Luminaire Illuminance (lux) 6076 lux at 2 meter
Housing Color 外觀顏色 Black 黑色
Input Voltage 輸入電壓 100 ~ 240 VAC
CRI 演色性 > 70
Quantity of LED LED 數量 1 COB
Housing of Material 外殼材質 Aluminum 鋁
Dimension 尺寸 374x497x380 mm
Operating Temperature 操作溫度 -20°C ~ 50°C
Net Weight 重量 7 Kg

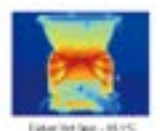
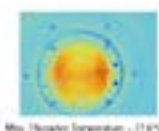
600 W
1000 W Replace 600 W-1000 W high pressure sodium lamps
代替傳統 600~1000 W 高壓鈉燈

- » Efficient thermal management enables the LED luminaire to replace 600 W-1000 W high pressure sodium lamps with less power consumption
- » Light Source: Patented 3-Pad LED Flip Chip COB with thermal resistance $R_{th}<0.01^{\circ}\text{C/W}$
- » Applying heat-pipe direct touch, crimped fin, and gear slotting technologies, the luminaire is more robust and lighter with optimized thermal dissipation.
- » Fabricated with module design concept, the fixture is adjustable to support various illuminations.
- » 高效能管理使得 LED 燈具能代替傳統 600~1000W 高壓鈉燈，並具備更少的能量耗損。
- » 光源：專利的 3 焊盤 LED 覆晶封裝技術能有效降低熱阻。
- » HDT、扣 FIN、插齒、壓管，四個創新生產工藝讓大功率散熱器更輕、裝備簡便、結構更堅固，散熱性能更好。
- » 透過模組設計方案的加工，可以讓夾具能夠支援不同的照明需求。

Dimension 基本尺寸



Thermal Characteristics (4 Hours Burn-In) 發熱特性 (運轉 4 小時)



Party Light G50 Bulb

派對燈 OS2032-0324-01



No UV or IR Radiation
不會有紫外線或紅外線輻射



Up to 25000 hrs Rated
Life time
使用壽命長達 25000 小時



High Efficiency, Increased Energy
Saving, High Quality Lighting Effect
高效率, 高節能, 高品質照明效率

Features / 產品特色

- » Up to 25000 hrs rated lifetime, reducing maintenance cost
- » High efficiency increasing energy saving, high quality lighting effect
- » High uniformity of light, create creating lighting atmosphere for retail & festival lighting applications.
- » Environment friendly – no UV, no Hg
- » 25000 小時高壽命, 減少維修花費
- » 高效率, 高節能, 高品質照明效率
- » 高均勻度的光線, 營造優雅氣氛的照明及節慶氛圍照明
- » 對環境友善, 無紫外線、無水銀輻射

Detailed Specification/ 詳細規格

Power Consumption 功耗 12 W CCT 色溫 3000 K/6000 K Beam Angle 發光角度 120° LED Chips LED 晶片 SMD LED Luminous Flux 光通量 900 lm 6000 K
CRI 演色性 70 Quantity of LED LED 數量 10 Pcs Housing of Material 外殼材質 Plastic 塑膠 Operating Temperature 操作溫度 0°C ~ 40°C
Input Voltage 輸入電壓 175 - 265 VAC LED Life Time LED 壽命 Approx. 25000 hrs Net Weight 重量 Approx. 500 g

LED Bottled Lamp

| 酒瓶燈

OS1051-0121-01 (Silver)



4 Steps Brightness Level
4 段式調光



Max. 100-Hour Continuous Lighting
連續使用 100 小時



Waterproof Against Water
Splashes 防水設計

Features / 產品特色

- » Rechargeable cordless lamp
- » 4 steps brightness adjustment
- » Max. 100-hour continuous lighting
- » Waterproof against water splashes
- » Illumination with transparent impression through specially made glass shade
- » LED module with low heat generating design
- » 無線充電燈
- » 四階段光源調整
- » 能連續使用 100 小時
- » 防水設計
- » 透過特殊的玻璃遮罩，讓照明呈現出透明的意象
- » 使用低發熱設計的 LED 模塊

Detailed Specification / 詳細規格

Power Consumption 功耗 0.15 W - 3.5 W CCT 色溫 2500 K Beam Angle 發光角度 360° LED Chips LED 晶片 18 Pcs Net Weight 重量 Approx. 1165 g
Housing Color 外觀顏色 Silver 銀色 Input Voltage 輸入電壓 3.7 V Rechargeable Lithium-on Battery Housing of Material 外殼材質 Glass Shade 玻璃罩 Aluminum 鋁
Operating Temperature 操作溫度 0 ~ 40° LED Life Time 使用壽命 Approx. 500 Cycles (Recharging Life)

Xtal

| 威士忌燈 OS1051-0122-01



New Compact Cordless Lamp – Xtal

全新的小型無線燈 - Xtal

A new cordless table lamp that offers warmth and hospitality, while attractively accenting the table.

新式無線燈具，營造出溫暖、大方以及極富吸引力環境。

Like our popular Bottled cordless lamps, Xtal incorporates a rechargeable battery, eliminating the need for a power cord, and enabling people to use it anywhere they like. The design is elegantly simple. Created by famous Japanese designer, Ryu Kozeki, this stylish lamp looks just like a glass, subtly hinting at how it is meant to be used. Before becoming a commercial product, the Xtal was presented at the Spazio Rossana Orlandi, one of the top design galleries in Milan, during Milan Design Week in April 2015. The double-sided LED developed originally by Ambientec irradiates light in all directions, enabling the Xtal to produce beautiful and effective illumination despite its compact size. The marvelous shimmering and extensive illumination are made possible by a metallic reflector with a smoothly curved surface combined with hand-cut solid glass and three-step brightness control. The Xtal has also been designed to be waterproof, making it flexible and reliable enough for use in a wide range of existing and new applications appropriate for cable-free lighting equipment, including professional applications in hotels, restaurants, resorts, and even in aircraft where the use of candles is not possible.

這款產品跟我們之前的明星產品酒瓶燈一樣採用的無充電線的設計，Xtal 內建了一組充電電池，讓它不用擔心被電源線所限制，能夠依照使用者的意願在任何地方使用。

Xtal 簡單優雅的設計源自於日本知名設計師小関隆一之手，在其宛若玻璃般透徹的時尚外觀之下也巧妙暗示出其用途概所在。在它正式量產前，Xtal 就在 2015 米蘭設計周時在位於米蘭最大的設計畫廊之一 Spazio Rossana Orlandi 展出。

Xtal 內部的 LED 使用了 Ambientec 原創的雙向 LED 光源，讓光能均勻地向四面八方照射，讓 Xtal 在有限的尺寸下產生美麗且亮度足夠的光源。其微妙的閃爍效果和廣泛的照明範圍則是透過結合了平滑曲面的金屬反射器還有手工切割的玻璃以及三段亮度可調設計來達成，同時 Xtal 也具備了防水設計。以上這些優點還有其耐用度，讓它能夠用在所有不能使用蠟燭的環境，像是酒店、餐廳、渡假村甚至是飛機上等。



Detailed Specification/ 詳細規格

Materials 材質 Lamp Shade 燈罩: Solid Glass 玻璃 Reflector Base 反光板底座: Aluminum 鋁 Dimensions 尺寸 82x80 mm Weight 重量 620 g Waterproofing 防水功能 IPX6
Light Source 光源 Double-sided LED 雙向 LED Color Temperature 色溫 2000 K Brightness Adjustment 亮度調整 3 Steps 三段式 Recharging Time 充電時間 3 hrs
Lighting Period 使用時間 Low 低: 24 hrs Mid 中等: 12 hrs High 高: 6 hrs Auto Lighting/extinction 自動啟閉功能 Recharging Method 充電方式 USB Recharging USB 充電接頭
Built-in Battery 內置電池 Rechargeable Lithium battery 充電式鋰電池 190 mA/3.7v Accessories 配件 USB charge cable, special charge stand USB 充電線、特殊充電座

Lighting Design Business Group

| 照明設計事業群

LDBG

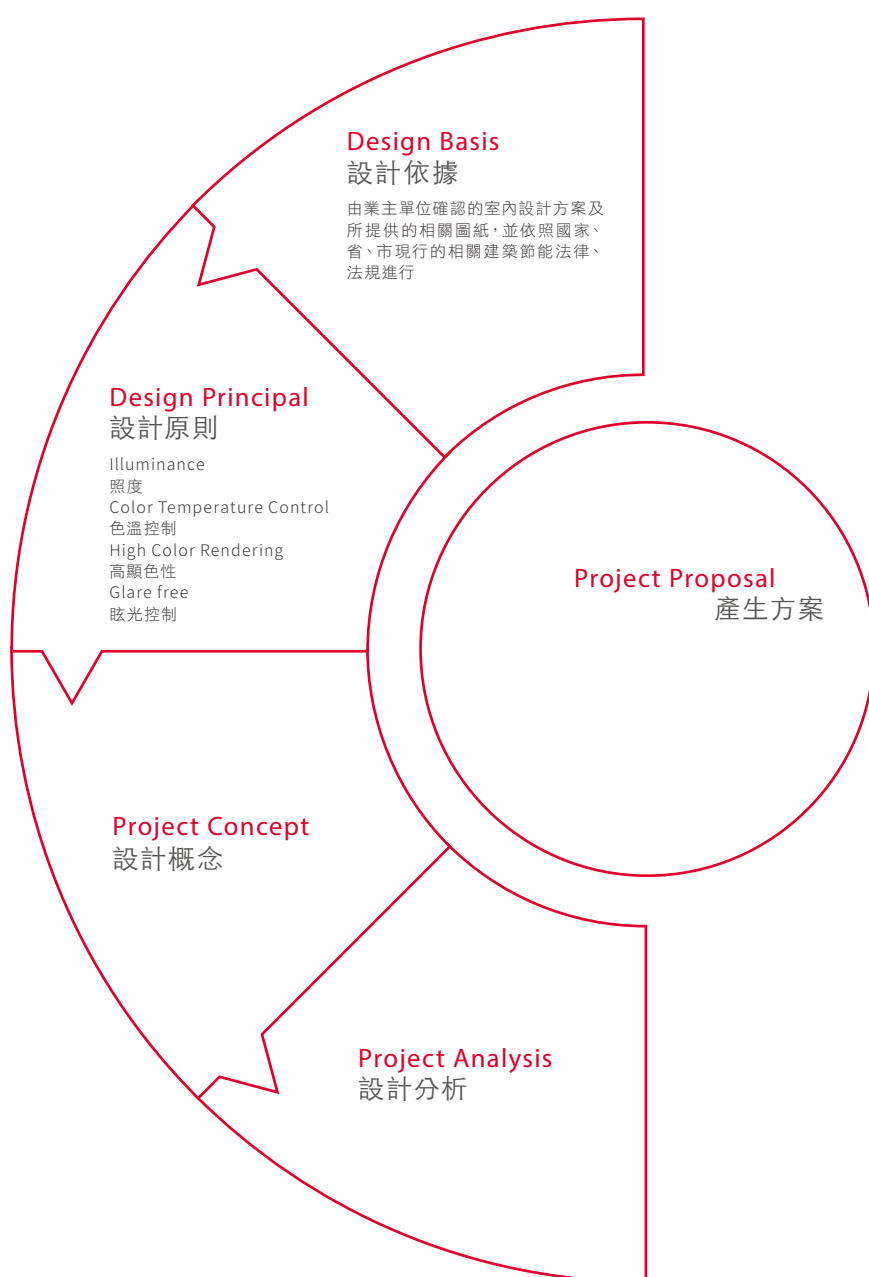
We proceed the lighting design for every indoor or outdoor environments, commercial buildings, museum lighting and stadium lighting. Based on the field conditions, we progress the simulation and rendering, and we can conclude the best Illuminance and light effect for the field through our ability of integrating optical design and customized luminaires and our experiences in Aesthetic and energy saving.

針對各種室內、室外照明、商業照明、博物館照明及體育館照明等設計，依現場狀況進行模擬 (Simulation)、渲染 (Rendering)，並搭配光學設計及客製化燈具整合系統能力，可調整出最適合該場域最佳的照度及光效，兼具美觀及節能省電的經驗。



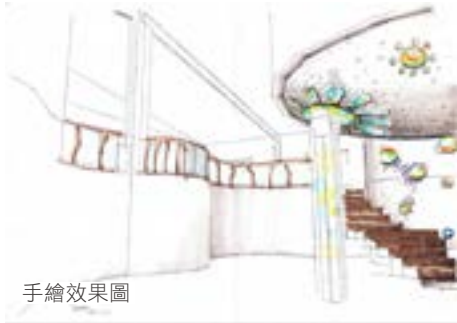
Design Process

| 設計流程



The Project of Lighting Design in Gaudi Museum

| 高迪博物館概念方案



手繪效果圖

Project analysis 設計分析

This building is carrying Gaudi's idea, dream and vision. We try to integrate everything of Gaudi, and continuing his idea that takes from nature and gives back to nature. Let people totally absorbed in a series of fantastic dream, and making this dream come true.

高迪的建築承載著高迪的思想、夢想與幻想，我們想把高迪的一切凝聚，把高迪取題於自然又還原於自然的理念延續，令人沈醉在最瘋狂的夢里，讓夢見於現實。

Project concept 設計概念

Childhood and solemn 童真與肅穆

We use the shape of flower to be consistent with Gaudi's humanities and nature image. We put spot light around the petal, letting the beam of light brilliant, just like a fairy tale. Also using circular colorful glass and embellishing with geometric patterns which like stars on the pillar. It shows Gaudi's ability of geometry color design, also makes the whole area more beautiful and feeling like childish innocence.

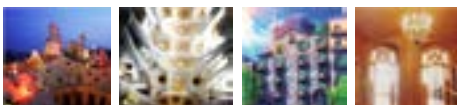
以自然界花朵的形狀，響應了高迪人文自然思想，在花瓣周圍安裝投影燈，使投射下的光斑五光十色，波幻淋漓，宛如童話仙境。柱上以瑰麗，紛彩的圓形彩玻配以星星點點的幾何彩色碎片，展現了高迪的幾何彩色設計元素，更使空間紛繁中衛生童趣。

Elements extract 元素提取

Gaudi's design is full of colorful collision, singular appearance and fusing with nature, making people totally absorbed in a series of fantastic fairy tale.

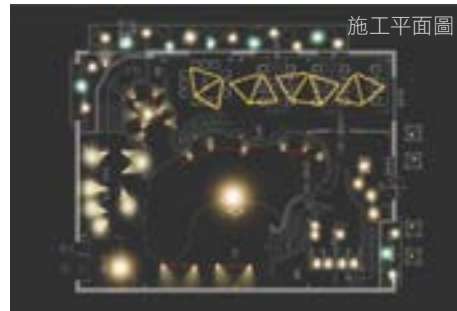
高迪的作品充滿了色彩的繽紛碰撞，奇異的形狀，自然的融合，彷彿置身在綺麗的夢幻童話中。

Gaudi's fairy tale 高地童話夢



Dream 夢幻
Gorgeous 斑斕
Interesting 趣蘊
Childhood 童趣

Program description 方案說明



施工平面圖

Unique Architectural style
Fashion a world like fairy tale
Colorful decoration, full of fantasy
Our design integrates nature environment
Appropriately perform the design theme and show the beauty of local culture.

獨特的建築風格
塑造童話世界般的房子
色彩斑斕的裝飾，充滿幻想
將設計融於大自然環境之中
設計主題恰當表現，體現當地文化審美意蘊



Coffee bar
咖啡吧

The elements of Architectural style, establish the lighting design of coffee bar. Make it feel gloomy.
高迪的建築元素與吧台燈光的結合，形成一個幽暗的感覺。



Cobblestone shape lighting window
鵝卵石形態採光窗

Lighting window just look like Cobblestone. Making the shape of light spot just like Cobblestone. Let people feel childlike interests.
在屋頂靠近景觀位置開採光窗，形狀猶如鵝卵石般，充滿童趣。



Garden
戶外園林

Using firefly as our idea, making it alive with Atmosphere of fairy tale.
帶入濃厚童話氛圍的螢火蟲概念

Guangdong Humen Concept Design of Deji Plaza

| 廣東虎門· 德基廣場設計概念方案



Project analysis 設計分析

The project is located in Bo Chung Community of Humen Town. This project is located in the Humen Road, and nearby the Xin Bo Road.

The project is near Golden Home, Parkview Heights, Longquan Commercial Plaza, Fumin Gem City and other projects. The spot is located in the planning and developing Humen New City Center area, surrounded by Humen Park, Humen Middle School, CITIC Bank, Tesco and other facilities. This spot has strong business atmosphere.

該項目位於虎門鎮博湧社區內，地塊毗鄰虎門大道，東鄰新博路，附近有金色家園、柏景豪庭、龍泉商業廣場、富民服裝雙子城等項目，地塊屬於規劃中的虎門新城市中心區內，周邊有虎門公園、虎門中學、中信銀行、樂購等設施配套，商業氛圍濃厚。

Project concept 設計概念

A city needs a commercial landmark
一個城市需要一個商業地標

It is the "fashion cradle" 它是「時尚策源地」
It is the "dating center" 它是「約會中心」
It is the "city location" 它是「城市外景地」



Design concept 設計構思

If you do not know where to go? Just follow the road to go on it!
Visual senses will take you to the right place!
Visual effect is the best way to attract attention!

如果你不知道要去哪兒？跟著路走就可以了！
視覺感官會帶你走向適合的地方！
視覺效果是吸引視線的最佳方式！



Analysis from the overhead view, part of the bridge is the flow of people gathered to the base of the important pedestrian flow channel. Lighting guidance is also very important in the night

從鳥瞰圖分析看，天橋的部分是人流匯聚到德基廣場的重要人流通道。起在晚上的燈光引導也是相當重要

Program description 方案說明



The effect of meteor across to set off the window and advertising billboards effect
配合流星划過的效果來襯托櫥窗和廣告位的效果



The effect of using meteor on the ground
地面流星效果



Simulation of internal effects of flyover for reference
天橋內部效果模擬參考



Star theme of the overall effect
星空主題整體效果



Star adornment effect simulation
繁星點綴效果示意

Jinshan Software Park in Guangdong Zhuhai

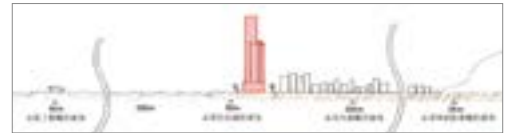
| 廣東珠海· 金山軟件園

Project analysis 設計分析

To explore the Jinshan cultural connotation and position software park image features.
挖掘金山文化底蘊· 定位軟件園形象特徵

Zhuhai Jinshan Software Co., Ltd. was founded in 1988, which is one of the most well-known software companies in China. In the course of more than 20 years of development, Jinshan soft achieved jumping development and also achieved great success. However, due to historical reasons, the office space in Jinshan is not concentrated, resulting in decentralized personnel, low efficiency, cost increases, affecting the scale. Zhuhai's natural advantages and the support by government policy, gave Jinshan an excellent platform, also this is an opportunity to focus on software business in Zhuhai, which is the construction of Zhuhai Jinshan Software Park.

珠海金山軟件股份有限公司創建於 1988 年，是中國最知名的軟件企業之一。在 20 多年的發展歷程中，金山軟件實現了跨越式發展，取得了巨大的成功。但由於歷史原因，金山公司的辦公場所不夠集中，導致人員分散、效率較低、成本增加、影響規模。珠海的天然優勢以及政府政策的支持，給了金山公司一個極佳的平台，一個將軟件業務集中於珠海的機會，那就是興建珠海金山軟件園。



Project concept 設計概念

The shape of the entire software park just like a mussels and luminous pearl produced in mussels. The design concept of this theme is to compare the park as the shine luminous pearl on the coast.

There is a high-tech software park Silicon Valley in the west, why we can't build our own high-tech software park just like Silicon Valley in the east.

整個軟件園規劃用地呈蚌形狀，而珍珠產於蚌，本主題的概念是把園區比作在海岸上綻放光彩的夜明珠，西方有硅谷這個高科技軟件產業，我們東方也將會打造一個媲美硅谷的極佳平台。

Elements extract 元素提取



The shape of the entire software park just like a mussels and pearls produced in mussels. We will use the light to transform the pearl into the luminous pearl and combine the circular luminous device on the top of the building.

園區基地呈扇形貝殼狀，而貝類會產出人門熟知的珍珠。而我們將珍珠通過燈光轉變成夜明珠融入到建築的最高點

Program description 方案說明

As the top of the tower, we use 4000 K light to simulate milk white pearl effect, as the theme.
作為園區制高點的塔樓頂部，我們以 4000 K 燈光來模擬奶白色的珍珠效果，以此作為主題的中心。

The body of building mixed with the dynamic light to express the flow of smart and pure
塔樓樓身以混色的動態燈光來表現水流的靈動和純粹

The lighting elements just like pearl use on top of the residential building. Also we match the side of the building with different level, letting the light produced drop effect
住宅樓頂部燈光同樣以珍珠元素來帶入整體效果，同時側面配合建築的高低差，用燈光模擬跌水的效果



D R & D area is fan-shaped using stair-style modern architecture, also using the light to produce drop effect
呈扇形環繞的研發區，台階式的現代建築特徵，我們燈光也利用燈光模擬跌水的效果來迎合建築設計。

F Corridor lighting is to increase the water dance effect, having the theme of light flowing from outside to inside.
連廊燈光增加水舞效果，讓燈光主題從外到內

E Garden-style streamlined corridor is across throughout the hall park, letting the overlooking more prominent. So the lights at the top of the canopy will match the shape and highlight its style. Using light to perform the cutting angle of the high light reflection.
園林的流線長廊貫穿整個園區，俯瞰視角較為顯眼。所以燈光在雨棚頂部也會配合造型來突出其風格。用燈光表現切角的高光反射

G There is a Jinshan LOGO on the top of the center building to catch the eyes. Our lights also will be highlighted at night, so that the "Jinshan people" can always see this sign, also can increase their sense of belonging!
園林中心建築頂部的醒目的金山 LOGO，我們燈光也會在夜裡把他突顯出來讓園區內的「金山人」時刻都能看到自己金山的標誌，增加歸屬感！

Lighting Design for Foshan Green Island Lake Industrial District

| 廣東佛山· 綠島湖都市產業區



Project concept 設計概念

Dynamic Cube

Using the effect of color dynamic cube running through the ceramic exhibition hall, and performing a sharp contrast with the opposite new industrial area.

動感魔方

利用彩色動感魔方效果來貫穿沿街的陶瓷展廳立面，與對面的新型產業區形成一個鮮明對比。



Flowing

Along the direction of the buildings, avoiding the impact on the residential tenants and passing vehicles and well using the vertical lighting to show the overall depth of the district.

行雲流水

結合建築群勢的流向，避開對住宅住戶及過往車輛的影響，巧妙地利用縱向的燈光來鋪開整體的縱深。



Project analysis 設計分析

Green Island Lake Industrial District is located near the junction of Foshan Highway and Jihua Road. The main car flow entering the district is through the back and forth directions of Jihua Road. From Jihua Road to Nanjiang, the Talent Apartment and Ceramics International will be the starting points of lighting to guide car or people into the district.

綠島湖都市產業片區地處佛山一環高速與季華路的交界處，主要的流量是通過這兩個季華路的往來方向進入到綠島湖片區。從季華大橋往南莊方向時候，人才公寓區和瓷海國際這兩個點會作為門戶，這裡燈光會作為一個起點，通過主題來引入整個片區。

Program description 方案說明



Along the direction of the buildings, avoiding the impact on the residential tenants and passing vehicles and well using the vertical lighting to show the overall depth of the district. As the starting points of lighting of the district, we use totally different lighting contrast to show the height and depth of the traditional industrial area and the high tech area. At the left side of the traditional industrial area, we use cube elements to suit the ceramic industry characteristic. At the right side of the high tech area, we use gentle curve lines to highlight the water element of the culture.

結合建築群勢的流向，避開對住宅住戶及過往車輛的影響，巧妙地利用縱向的燈光來鋪開整體的縱深。作為進入南莊綠島湖片區的雙門戶，在此處我們利用截然不同的燈光對比來展示傳統產業區和高新片區的縱深感。左邊傳統產業區燈光手法偏向方塊元素，與陶瓷產業的特性迎合。右邊高新片區燈光效果偏弧線柔性，重點突出水鄉文化的水元素。



橋上視覺可清晰看見作為門戶的兩個建築群，在左邊的傳統產業區會以陶瓷的元素來引入燈光主題，在右邊的新興產業區，會以燈光迎合建築規劃的導向，形成縱深的整體層次。

You can clearly see the two building areas as the two starting points of the district. At the left side of the traditional industrial area, we use ceramic elements to guide the lighting theme. At the right side of the high tech area, we use lighting to suit the planning direction of the buildings to perform the overall height and depth of the district.

Shaoguan Nan Hua Temple Road LED Street Lamp Project Plan Description

| 韶關南華寺公路 LED 路燈工程項目

Project analysis 設計分析

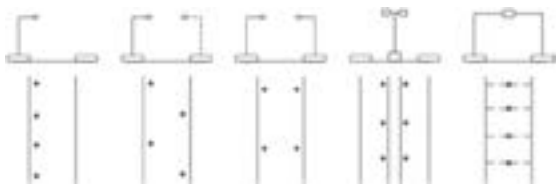
Current status of nanhua temple highway section
南華寺公路段現況



Project concept 設計概念

High-end road lighting design services
高端道路照明設計服務

- » Design of optical components based on road conditions 依據道路現況設計光學組件
- » Replacing the optical module to meet various road requirements 更換光學組件模塊符合各類道路需求
- » Planning road lighting to optimize fixture configuration 規劃道路照明優化燈具配置
- » Complete implementation of road lighting engineering simulation / analysis / evaluation implementation 完整的道路照明工程仿真 / 分析 / 評估
- » Quality road lighting energy-saving emission reduction targets 落實高質量道路照明之節能減排目標



Road type - specification assessment (Class I / II / III)
道路型式 - 規範評估 (I 級 / II 級 / III 級)

- » Roadway classification - lighting distribution (Single side / staggered / symmetric / central) 路權分類 - 燈具分布 (單側 / 交錯 / 對稱 / 中央)
- » Light pole spacing - TRL transverse light distribution (short S / medium M / long L) 燈桿間距 - TRL 橫向配光 (短 S / 中 M / 長 L)
- » Number of lanes - LRL longitudinal distribution of light (Type I / II / III / IV) 車道數目 - LRL 縱向配光 (Type I / II / III / IV)

Street lighting requirements
路燈要求

- » Guidance of street lamps 指引性路燈
- » Lamp display 布燈方式
- » Unilateral lamp display of LED luminaire for lighting design 單邊布燈引進 LED 燈具進行燈光設計
- » Basic illumination calculation and illumination arrangement 基礎照度計算及照度安排
- » Light source color temperature 光源色溫
- » Select the beam angle of the lamp 燈具光束角選配
- » Matching Anti - glare design 防眩光設計

Program description 方案說明

We design the lamp poles with Nan Hua Temple's features. Using secondary optical design to let the road lighting more uniform and soft. Using the intelligence control to save more energy. The construction progress could be adjusted according to client demands.

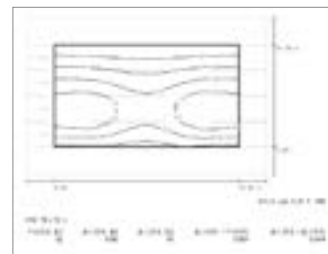
將燈桿設計具有南華寺特色的造型
二次光學配光，道路照明均勻、柔和
使用智能控制系統更加節能
施工工期可以按照客戶之需求推進



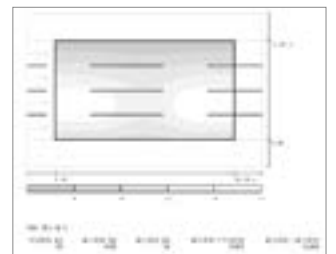
Overall driveway false color map
整體車道偽色圖



Pavement simulation effect
路面模擬效果



Driveway Illumination distribution
車行道照度圖分布



Driveway gray - scale distribution 車行道灰度圖分布